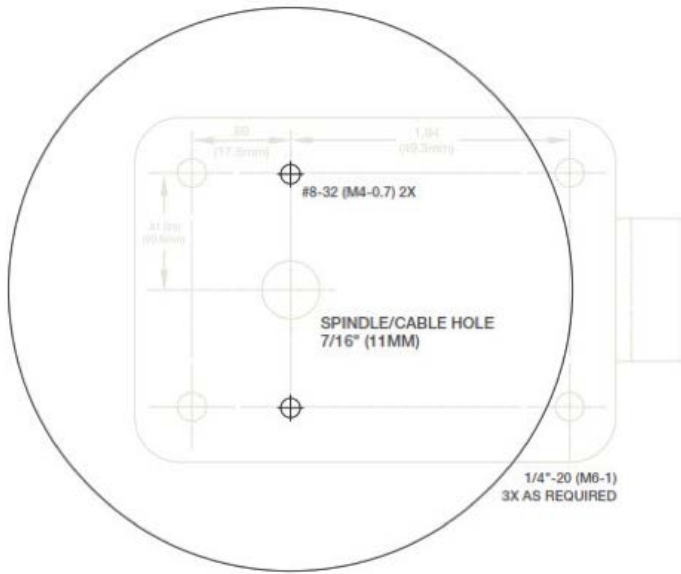




Drill-Deburr-Tap Template



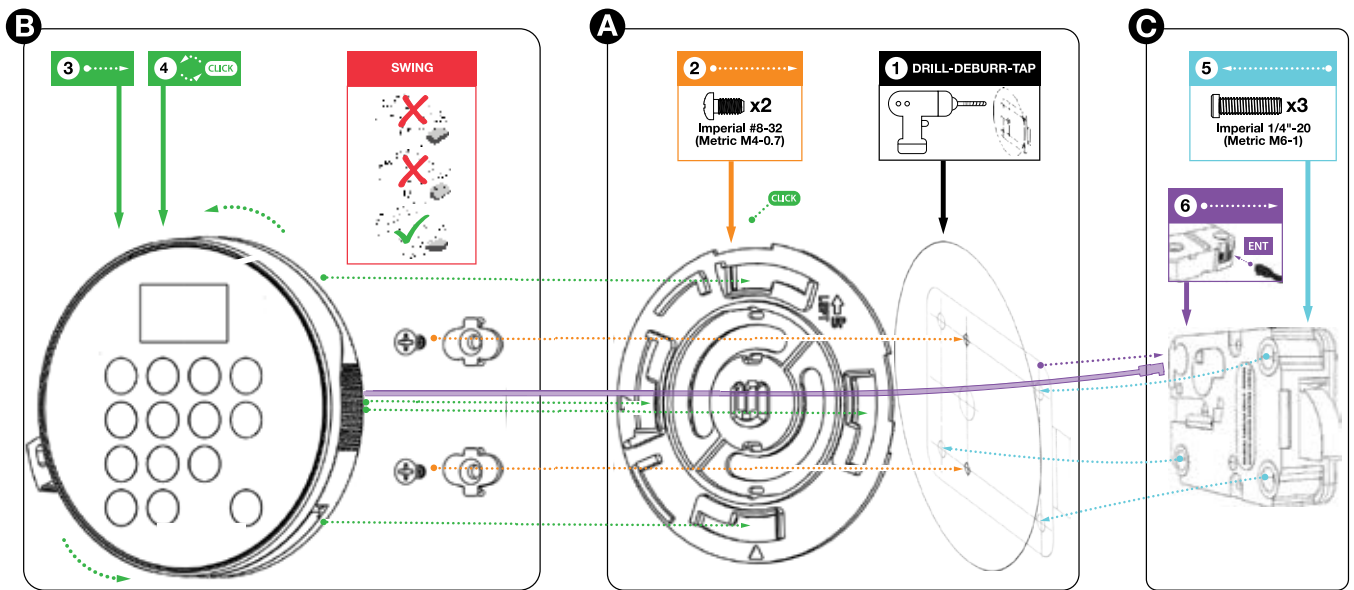
Swingbolt Installation with Fixed Keypad

1. With the arrow symbols facing up, attach the base plate to the safe using the drilled and tapped holes
2. Attach the anti-rotate octagonal shaped ring onto the back of the keypad using the 4 posts to hold it in place
3. Feed the cable through the small cable ring (with the round center) and place the ring over the posts on the back of the keypad where the cable comes out
4. Feed the cable through the opening in the safe door to the inside of the safe.



5. Mount the keypad pointing to 11 o'clock, into the open channels on the base plate
6. Turn the keypad clockwise until it is vertically aligned at 12 o'clock and locked into place  
Note: Some resistance occurs when turning the keypad and locking the anti-rotate ring into place. The keypad cannot be removed from the safe without damaging the keypad.
7. Install the Swingbolt lock.

Swing Bolt Installation





### Deadbolt and Springbolt Installation with Turn Keypad

1. With the arrow symbols facing up, attach the base plate to the safe using the drilled and tapped holes
2. Feed the cable through the small cable ring (with the round center) and place the ring over the posts on the back of the keypad where the cable comes out
3. Insert the spindle into the back of the keypad and press it down all the way inside the keypad
4. Place the keypad on the door to measure your spindle length, leaving an extra 9.0mm past the edge of the safe to accommodate for it to reach into the lock once installed
5. Remove the keypad from the safe, remove the spindle from the keypad and cut it to size
6. Place the newly cut spindle back into the back of the keypad and press it down all the way inside the keypad
7. Feed the cable and spindle through the opening in the safe door to the inside of the safe
8. Mount the keypad to the base plate pointing to 11 o'clock, into the open channels on the base plate
9. Turn the keypad clockwise until it is vertically aligned at 12 o'clock
10. On the inside of the door, place the cable and spindle holder (round plastic ring with square center) over the cable and spindle to hold them together ensuring that the cable is running flat along the groove on the spindle
11. Install the Deadbolt or Springbolt lock.



#### Dead Bolt & Spring Bolt Installation

